

BREAKOUT

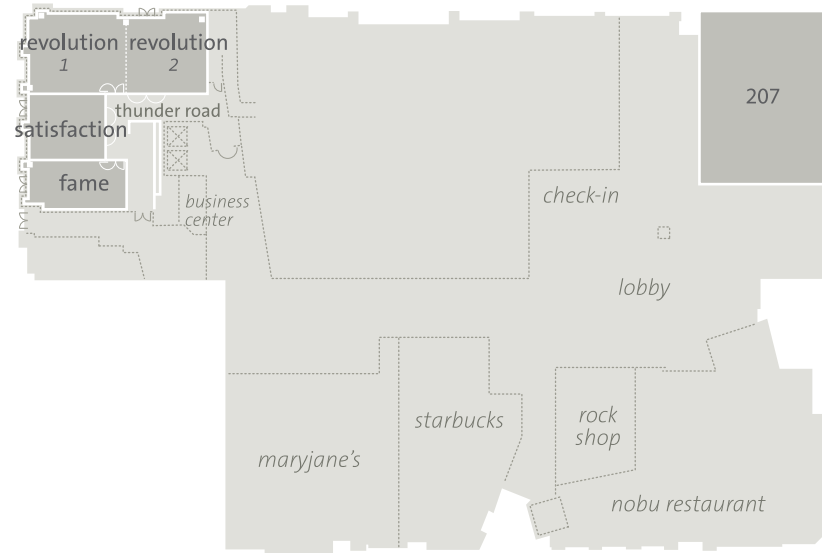
MEETINGS AT HARD ROCK HOTEL

SAN DIEGO



MEETING SPACES

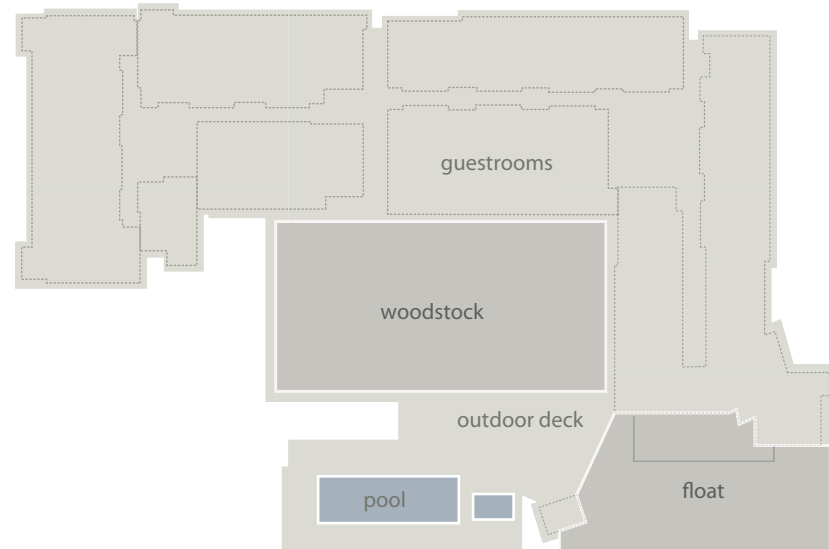
FIRST FLOOR



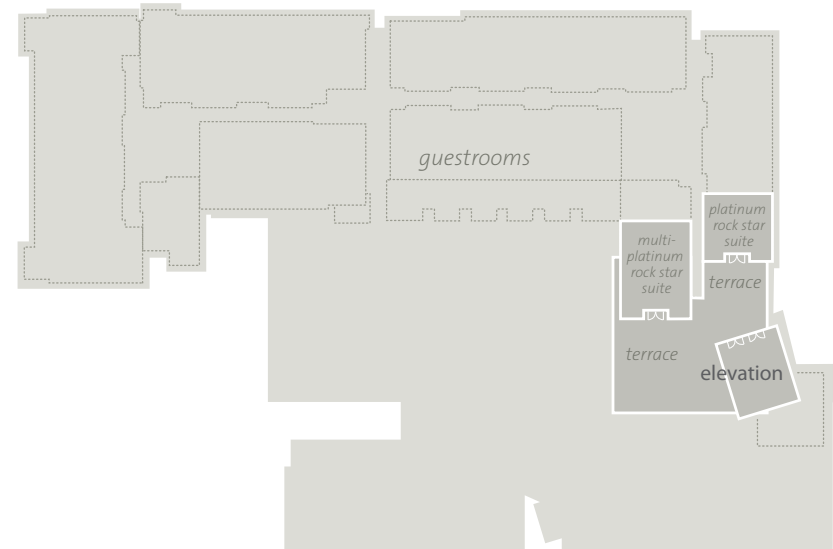
SECOND FLOOR



FOURTH FLOOR



ELEVENTH FLOOR



room	dimensions	square feet	ceiling	reception	theater	classroom	conference	u-shape	banquet	hollow sq.
<i>first floor</i>										
revolution	65' x 28'	1,732	10'	160	150	86	52	68	120	72
<i>revolution 1</i>	35' x 28'	953	10'	95	95	54	32	34	70	42
<i>revolution 2</i>	29' x 28'	778	10'	85	60	39	22	28	50	30
satisfaction	26' x 25'	668	10'	60	45	24	16	20	40	28
fame	36' x 16'	601	10'	60	45	24	16	20	40	28
<i>second floor</i>										
imagine	62' x 26'	1,585	14.5'	150	140	80	40	64	90	68
<i>imagine 1</i>	36' x 26'	922	14.5'	95	80	38	26	34	60	38
<i>imagine 2</i>	25' x 26'	662	14.5'	65	54	24	20	24	50	28
celebrate	27' x 69'	1,898	14.5'	180	155	104	62	76	120	84
legends	131' x 70'	9,170	20'	1,000	800	425	—	180	500	—
<i>legends 1</i>	43' x 35'	1,528	20'	125	125	75	40	32	100	40
<i>legends 2</i>	43' x 35'	1,528	20'	125	125	75	40	32	100	40
<i>legends 3</i>	43' x 35'	1,528	20'	125	125	75	40	32	100	40
<i>legends 4</i>	43' x 35'	1,528	20'	125	125	75	40	32	100	40
<i>legends 5</i>	43' x 35'	1,528	20'	125	125	75	40	32	100	40
<i>legends 6</i>	43' x 35'	1,528	20'	125	125	75	40	32	100	40
abbey road	24' x 130'	3,120	10'–14'	200	—	—	—	—	—	—
penny lane	21' x 53'	1,107	14'–20'	100	—	—	—	—	—	—
encore	86' x 25'	2,150	8'	215	180	100	45	48	160	54
<i>encore 1</i>	27' x 25'	675	8'	70	50	30	18	24	50	32
<i>encore 2</i>	30' x 25'	750	8'	80	50	36	18	24	60	32
<i>encore 3</i>	29' x 25'	725	8'	80	50	36	18	24	60	32
the edge	96' x 41'	3,946	14'	350	300	165	80	80	200	80
watchtower	21' x 29'	609	14'	—	—	—	12	—	—	—
<i>fourth floor</i>										
woodstock	132' x 66'	8,710	—	650	—	—	—	—	400	—
<i>eleventh floor</i>										
elevation	22' x 26'	572	9'	40	40	30	12	18	30	18
elevation + terraces	—	1,620	—	125	—	—	—	—	80	—

For more information, please call our event coordinators at 619-764-6440, or visit hardrockhotelsd.com